

Football Turf Pitch Testing Companies

	<u>Telephone</u>	<u>Website</u>	<u>Office Location</u>
CST Global	020 8293 6655	www.cst-global.com	London
Labosport	01773 765007	www.labosport.co.uk	Derby & London
Sport Labs	0845 602 6354	www.sportlabs.co.uk	Scotland & Derby

Prices

Full Size Pitches – Cost excludes VAT

1 pitch	£1700	
2 pitches	£1350	NB: to qualify for this price, they must be on the same site or within 45 minutes of each other and tested on the same day
3+ pitches	£1250	NB: to qualify for this price, they must be tested on consecutive days & covers by single order / invoice

Small Size Pitches – Cost excludes VAT

1 pitch	£1400	
2 pitches	£1250	NB: to qualify for this price, they must be on the same site or within 45 minutes of each other and tested on the same day
3+ pitches	£1150	NB: to qualify for this price, they must be tested on consecutive days & covers by single order / invoice

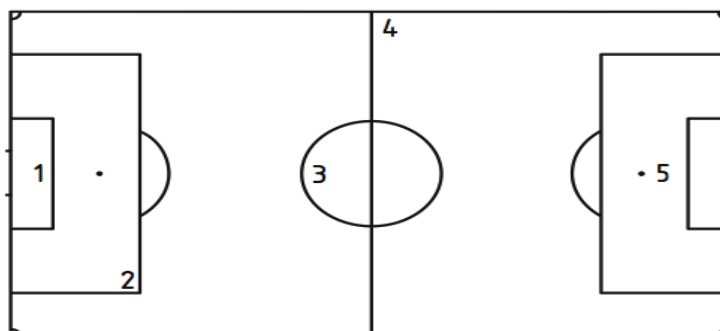
The prices have been confirmed and approved and will be valid for the 13/14 season and will be reviewed at the end of the season.

Process

All pitches of all sizes wishing to be used for competitive play outside the NLS must be tested in accordance with and in the positions defined in the table below which is based on the British Standard for synthetic turf sports surfaces; BS EN 15330-1; by a recognised test house (a test laboratory accredited by FIFA and or having ISO 17025 accreditation by UKAS for each of the tests specified). The facility operator should commission and pay for the cost of this.

Full-size long pile synthetic turf football pitches should be tested in the positions shown in Figure 1. For smaller pitches (less than 3000 m²), position 1, position 3 and position 4 should be used.

Figure 1 — Test positions for full-size football pitches



Characteristic

Vertical ball rebound
Ball roll (0°, 90°, 180° and 270°)
Shock absorption (AAA)
Vertical deformation (AAA)
Rotational resistance
Surface regularity
Overall pitch dimensions
Run-offs (sides and goals)

Test method

BS EN 12235 / FQP TM 01
BS EN 12234 / FQP TM 03
FQP TM 04a
FQP TM 05a
BS EN 15301-1 / FQP TM 06
BS EN 13036-7
Surveyor's tape
Surveyor's tape

A copy of the test report will need to be sent to The FA so they can review and determine if the pitch is suitable for competitive play. If suitable the pitch will be added to the register and the facility operator, County FA and Leagues will be notified of this. If not suitable then the site should not be used for competitive play until remedial work has been undertaken and another test performed. Please note that a pitch may still be suitable for training even if it is deemed unsuitable for match play. If a pitch needs to be re tested and this is not done on the same day, there will be an additional charge. The pitch will need to be tested every three years to remain on the register. Any pitch certified under the *FIFA Quality Programme for Football Turf* will be added to the FA register for three years from the date of the field test.

For full guidance notes and a list of approved facilities, please use the following link - <http://3g.thefa.me.uk>